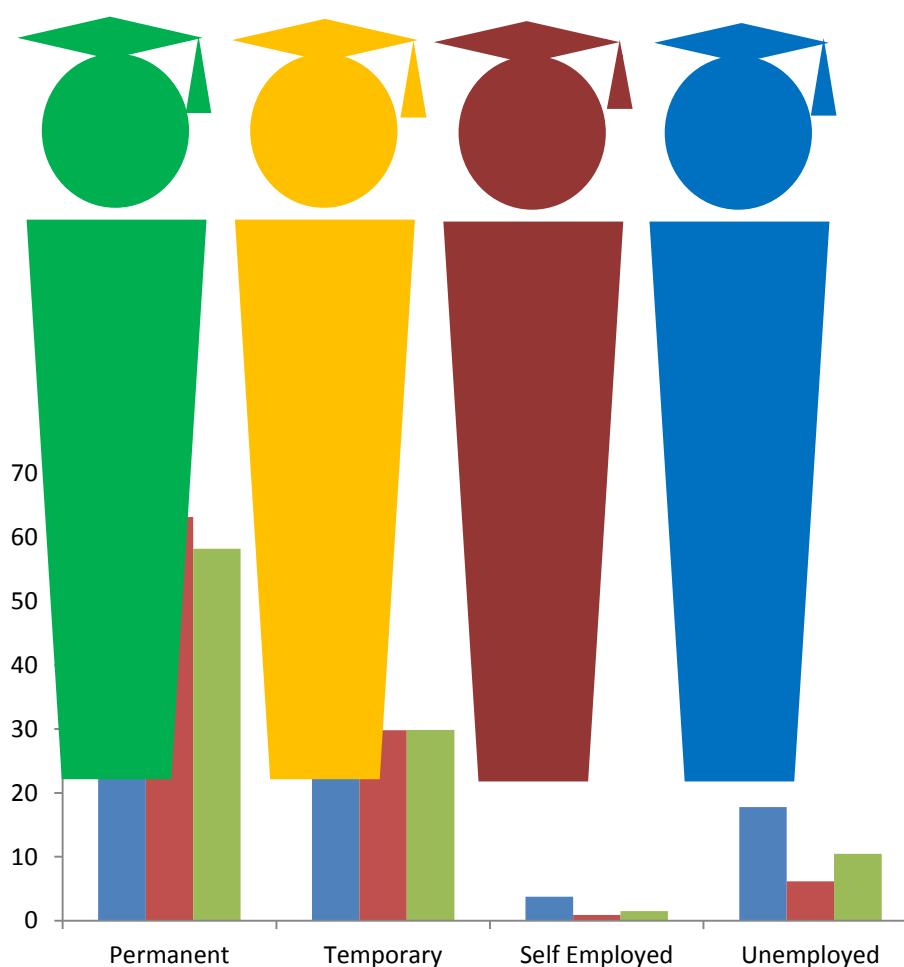


EMPLOYABILITY SURVEY REPORT WAYAMBA UNIVERSITY OF SRI LANKA



**External Affairs Unit
2019**



EMPLOYABILITY SURVEY REPORT

WAYAMBA UNIVERSITY OF SRI

LANKA

by

Dr. W.M.H.K. Wijenayake and Dr. I. P. M. Wickramasinghe
External Affairs Unit
Wayamba University of Sri Lanka
2019

This report should be sited as;
Wijenayake W.M.H.K and Wickramasinghe I.P.M. (2019), Employability Survey
Report of Wayamba University of Sri Lanka 2019.

Published by:

External Affairs Units
Wayamba University of Sri Lanka

Addresses:

Coordinator/External Affairs (Makandura Premises)
Department of Aquaculture & Fisheries
Faculty of Livestock, Fisheries & Nutrition
Makandura
Gonawila

Coordinator/External Affairs (Kuliyapitiya Premises)
Department of Mechanical & Manufacturing Technology
Faculty of Technology
Kuliyapitiya

E-mail: hiranyakelum@wyb.ac.lk
 manjulaw@wyb.ac.lk

The raw survey data is available upon request.

All queries should be addressed to:

Coordinator
External Affairs Unit
Wayamba University of Sri Lanka
Makandura
Gonawila
Fax: 031-2299874
E-mail: extaff@wyb.ac.lk

Survey Data Analysed by: K.B.V.B.R. Gunathilaka, Statistical Officer

Typesetting & Designed by: P.G. L. Gamage, Management Assistant

Employability Survey Results 2019: Faculty of Applied Sciences (FAS)

Response Rate of FAS for Employability Survey

The questionnaire was distributed among all students in the Faculty of Applied Sciences (FAS) eligible to receive the degrees at the General Convocation of the Wayamba University of Sri Lanka held in January 2020. This senses comprised of all specialization programmes offered by FAS. The response rate for the questionnaire was high in all degree programmes and overall response rate was 97% (**Table 1**). Duration of the date of degree completion and the survey is given in the **Table 02** under the Introduction of the report.

Table 1. Response rates for the questionnaire by graduates in FAS, who were eligible to obtain the degree at General Convocation held at January 2020.

Degree programme	No. of Questionnaire Sent	No. of Questionnaire Received
B.Sc. (General)	159	65
B.Sc. (Joint Major)		74
B.Sc. (Special) in Applied Electronics		1
B.Sc. (Special) in Mathematics with Statistics		5
B.Sc.(Special) in Industrial Management		3
B.Sc.(Special) in Computer Science		7
Total		159

Demography of Graduates

Among the total graduates of the FAS, 43% were females and 57% were males. More females were enrolled in specialization programmes according to statistics (**Table 2**).

Table 2: Gender composition of graduates in FAS.

Degree Program	Female	Male	Total no. of graduates	% Female	% Male
B.Sc. (General)	16	49	65	25	75
B.Sc. (Joint Major)	41	33	74	55	45
B.Sc. (Special) in Applied Electronics	1	0	1	100	-
B.Sc. (Special) in Mathematics with Statistics	3	2	5	60	40
B.Sc.(Special) in Industrial Management	3	0	3	100	-
B.Sc.(Special) in Computer Science	3	4	7	43	57
Total	67	88	155	43	57

Majority of the students were within the age range of 24-26 and reported as 63%. Of the total graduates 34% were in the age group of 27-29 years. There were 3% of graduates fallen in to age category above 30 years in FAS (**Figure 1**).

Four ethnic groups were represented among the total graduates and namely Sinhala, Tamil, Muslim and Other. Sinhala, Tamil, Muslim and Other ethnic groups were represented as 92%, 5%, 2% and 1% were respectively in graduate population (**Figure 2**).

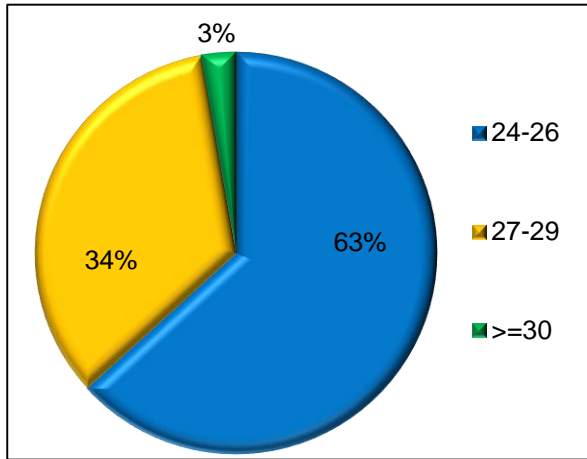


Figure 1. Age structure of the graduates in the FAS.

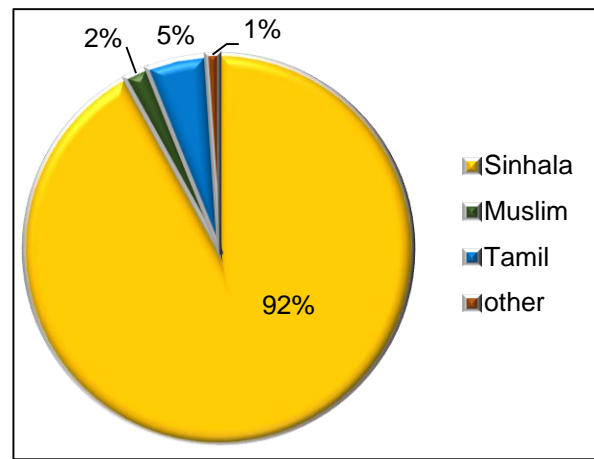


Figure 2. Representation of different of ethnic groups in the FAS.

Students from semi-urban areas have represented 51% of the graduate population in 2019. Students from rural and urban areas were reported as 28% and 21% respectively (**Figure 3**).

Among total graduate population in FAS, 28% had single attempt in Advance Level Examination. Majority of Students (60%) had second attempt and 12% was entered the University at their third attempt (**Figure 4**) of Advance Level Examination.

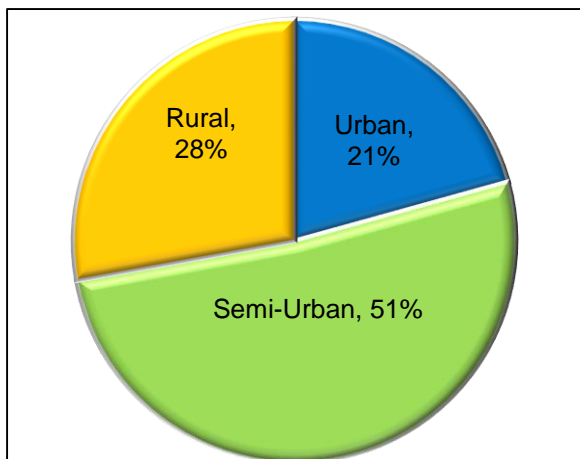


Figure 3. Residential areas of graduates

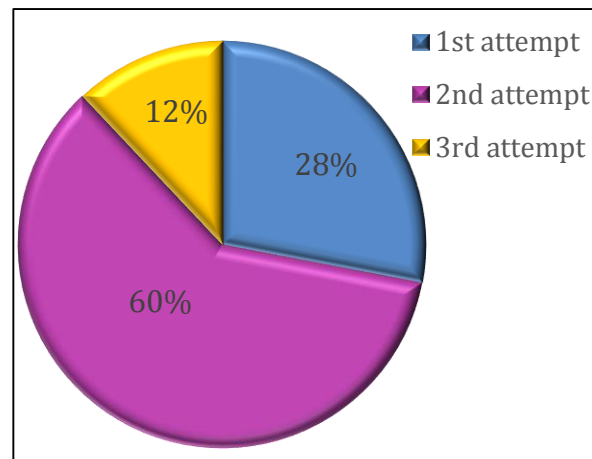


Figure 4. Number of A/L attempts for university entrance

Linguistic medium of A/L education of the majority (91%) of graduates was in Sinhala. Tamil and English medium A/L candidates were reported as 5% and 4% respectively (**Figure 5**).

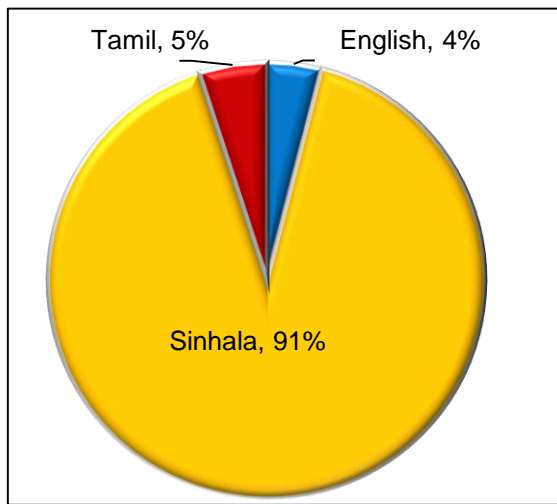


Figure 5. Linguistic medium of A/L examination of graduates

Academic Performances of Graduates

There were 02 first classes reported among 146 respondents and was 1.4% among total graduates. Second Class Upper Passes were reported as 13% while 13% obtaining Second Class Lower Passes at General Convocation held in January, 2020. Other students (72.6%) had obtained General Passes in the final examination (**Figure 6**). **Table 3** indicates the number of students with their respective grades at the final degree examination and **Figure 7** indicates the percentage distribution of different grades among degree programmes of FAS.

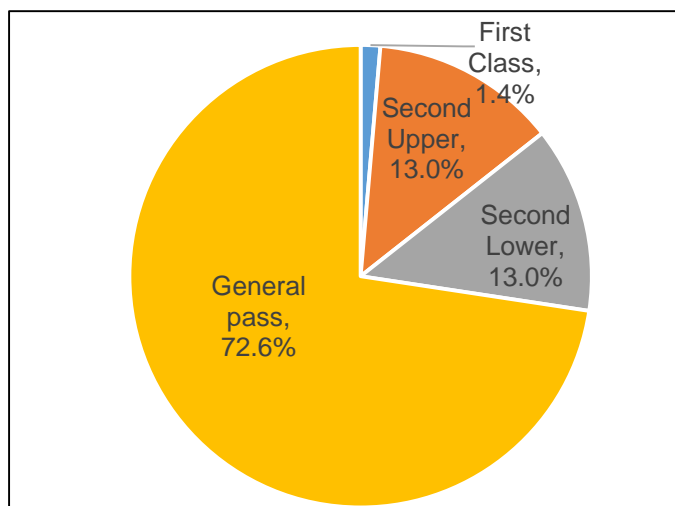


Figure 6. Overall performance of graduates in FAS

Table 3: Performance of graduates in different degree programmes in FAS

Degree	First Class	Second Upper	Second Lower	General Pass	Total
B.Sc. (General)	-	1	1	55	57
B.Sc. (Joint Major)	-	4	18	51	73
B.Sc. (Special) in Applied Electronics	-	1	-	-	1
B.Sc. (Special) in Mathematics with Statistics	2	3	-	-	5
B.Sc.(Special) in Industrial Management	-	3	-	-	3
B.Sc.(Special) in Computer Science	-	7	-	-	7
Total	2	19	19	106	146

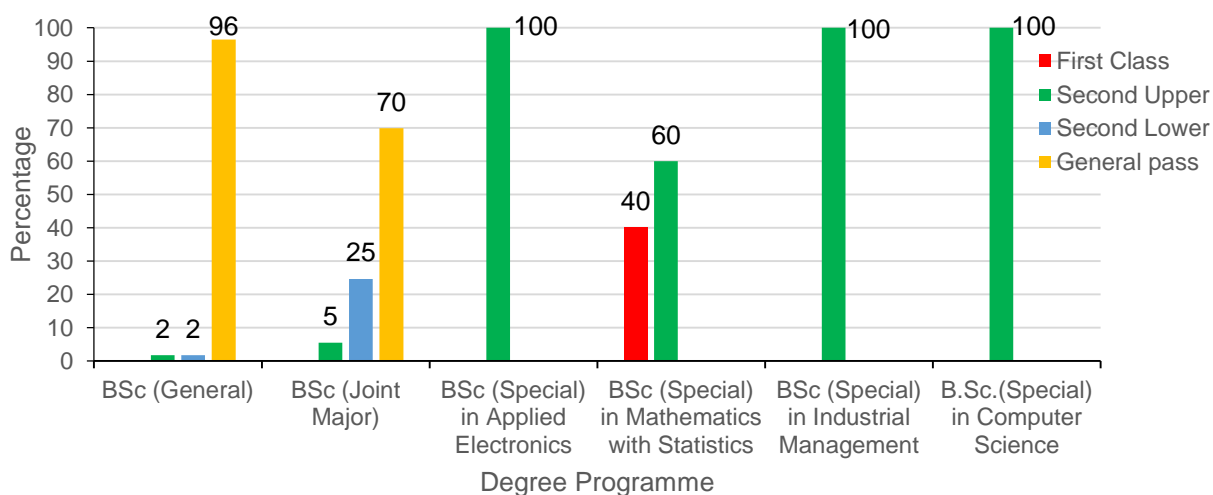


Figure 7: Percentages of different grades obtained by students in different degree programmes offered by FAS.

Employability Status of Graduates

Among 155 total graduates 151 were answered for the question, which was related to their employment categories. The employability status of the graduates in FAS at the general convocation held in January 2020 was 79%. **Table 4.** indicates the enrolment of graduate in different employment categories. Of the all employed graduates responded to this question 62% have obtained permanent jobs and 22% of them were in temporary positions, 10% in contract basis and 6% were in trainings (**Figure 8**). In this analysis graduates in training attachments were considered as employed.

Table 4: Different categories of employments of graduates in FAS

Degree	Contract basis	Permanent	Temporary	Training	Unemployed	Total
B.Sc. (General)	6	30	3	2	21	62
B.Sc. (Joint Major)	3	40	16	4	10	73
B.Sc. (Special) in Applied Electronics	-	1	-	-	0	1
B.Sc. (Special) in Mathematics with Statistics	1	-	4	-	0	5
B.Sc.(Special) in Industrial Management	-	-	2	1	0	3
B.Sc.(Special) in Computer Science	2	4	1	-	0	7
Total	12	75	26	7	31	151

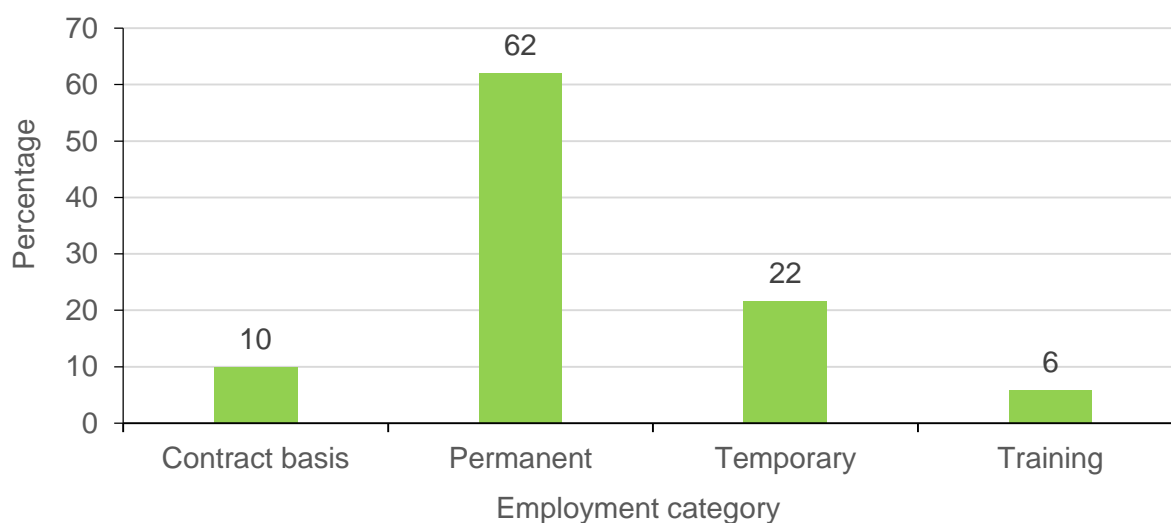


Figure 8. Percentage enrolments of graduates of FAS in different employment categories.

Different Sectors of Employers

Total of 117 graduates had answered for this question. Among the responded graduates for this question, percentage employed in private sectors was 68%. Percentage employability in public sector and semi government sector were reported as 18% and 14% respectively (**Figure 9**).

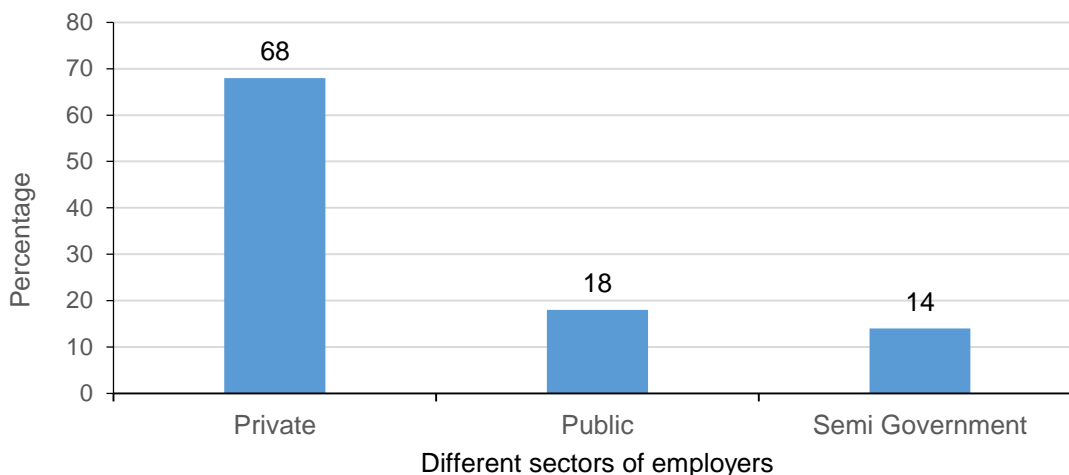


Figure 9. Percentage job enrolments of graduates of FAS in different sectors of employers.

Monthly Salary Levels of Employed Graduates of FAS

Among all employed graduates of FAS in 2019, 104 graduates had answered for this question. **Table 5** indicates the distribution of graduates among different salary scales. Majority of students (36.5%) had received salaries between Rs. 40,000 to 49,999 scales and the salaries of 20% graduates were fallen in to Rs. 30,000 to 39,999 category. Salaries of 31.8% students were above Rs. 50,000 (**Figure 10**).

Table 5. Salary levels of employed graduates of FAS

Monthly Salary (LKR)	B.Sc. (General)	B.Sc. (Joint Major)	B.Sc. (Special) in Mathematics with Statistics	B.Sc.(Special) in Industrial Management	B.Sc.(Special) in Computer Science
10000-19999	-	1	-	-	-
20000-29999	2	9	-	-	-
30000-39999	10	11	-	-	-
40000-49999	6	24	4	2	2
50000-59999	2	6	-	1	-
60000-69999	4	7	-	-	-
70000-79999	3	-	-	-	-
80000-89999	2	-	-	-	-
90000-99999	1	-	1	-	-
< 100000	4	2	-	-	-
Total respondents	34	60	5	3	2

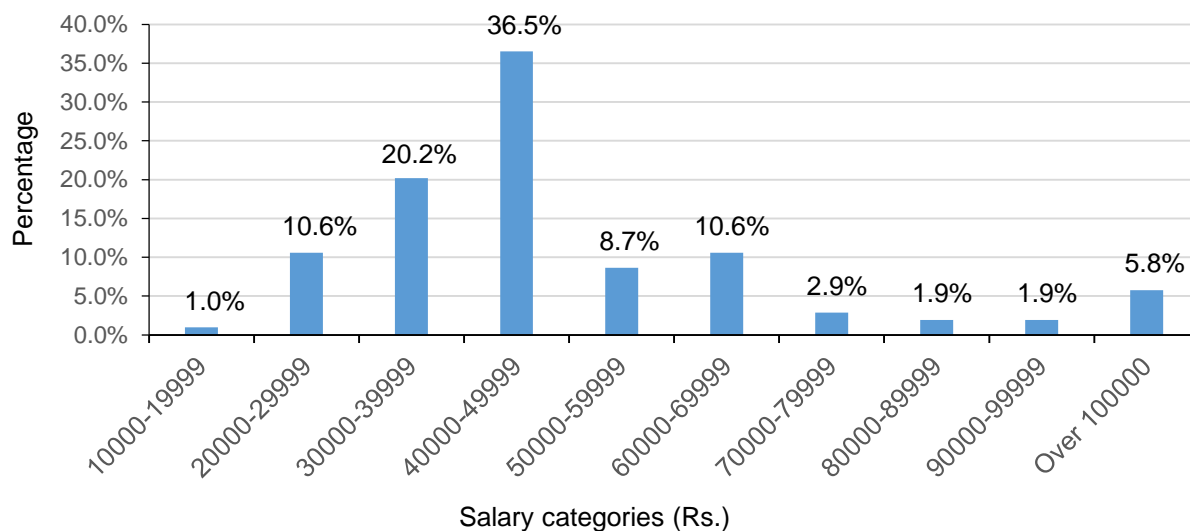


Figure 10. Percentage distribution of employed graduates in different salary levels

Perceived Relevance of the Degree Programme to Current Employments of Graduates of FAS

Perceived relevance of the degree programme to the employment indicates employers' recognition of the knowledge and training provided by the course units. Its direct indication is the relevance of the training given by the University to the needs of the industry. Majority of the students graduated from FAS in different degree programmes had high relevance to the job and their knowledge gained from the University (**Table 6**). **Figure 11** indicates the percentage of students in relation to different levels of relevancy of the job to the study programme. Among the responds for this question, 59% of graduates were employed in jobs with the relevance of higher than 75%. More than 86% employed graduates in the faculty had over 50% relevance of their jobs to the study programme. Only 14% of students had indicated the low levels of matching their Degree to the current occupation. (**Figure 10**).

Table 6. Perceived relevance of degree to employment

Degree	Perceived relevance of degree to employment					Total
	10%	25%	50%	75%	100%	
BSc (General)	1	7	12	16	3	39
BSc.(Joint Major)	1	5	17	23	16	62
BSc (Special) in Applied Electronics	-	-	-	-	1	1
BSc (Special) in Mathematics with Statistics	-	1	-	-	4	5
BSc (Special) in Industrial Management	-	-	1	-	2	3
BSc (Special) in Computer Science	-	-	-	-	1	1
Total responses in each category	2	13	30	39	27	111

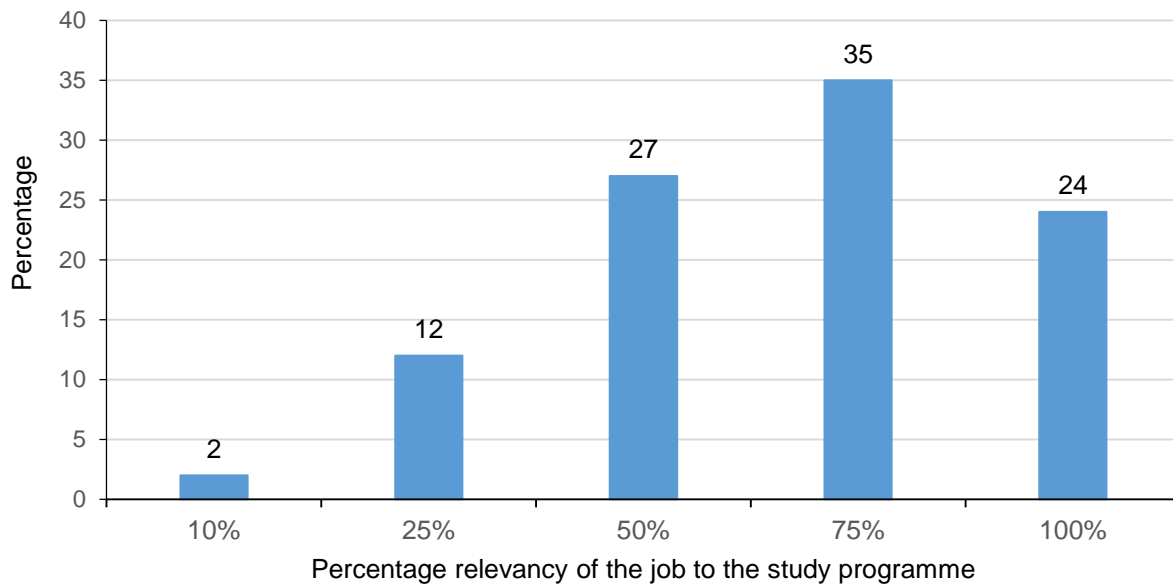


Figure 11 Percentage relevance of the degree to employment

Level of Job Satisfaction among Graduates of FAS

This question was answered by 121 students. Among all respondents 21% were very satisfied about the present job and 53% percent of graduates were satisfied with the current employment. Present survey indicated that 23% of graduates had average satisfaction about their employment. 2% percent of graduates were dissatisfied and 1% percent of graduates were very dissatisfied with the current employment (**Figure 12**).

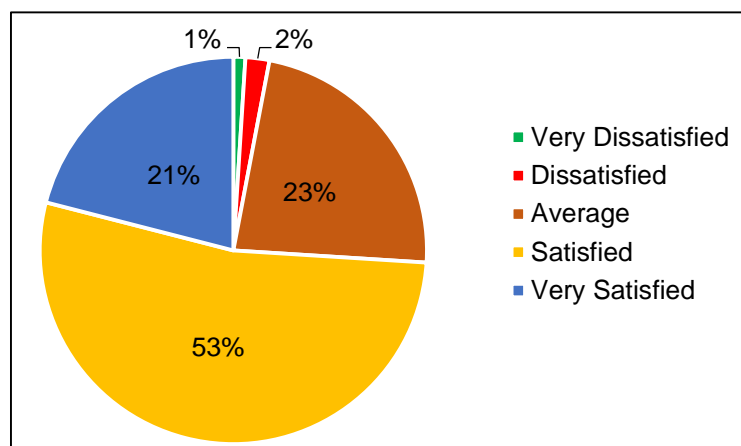


Figure 12. Level of satisfaction of the current employment

Most Influential Factors to Obtain Present Job

This question was answered by 123 students. Students could give multiple answers for this question (Annexure 1). From the frequency of the answers; Degree was the main influencing factor to find the job. Field of study, personality and soft skills, proficiency in English and computer literacy, previous work experiences and field of study have similar importance to find the current occupation (**Figure 13**). Most importantly the class of the degree, reputation of the university, personal contacts had minor influences in finding the jobs of the graduates from FAS according to their responses.

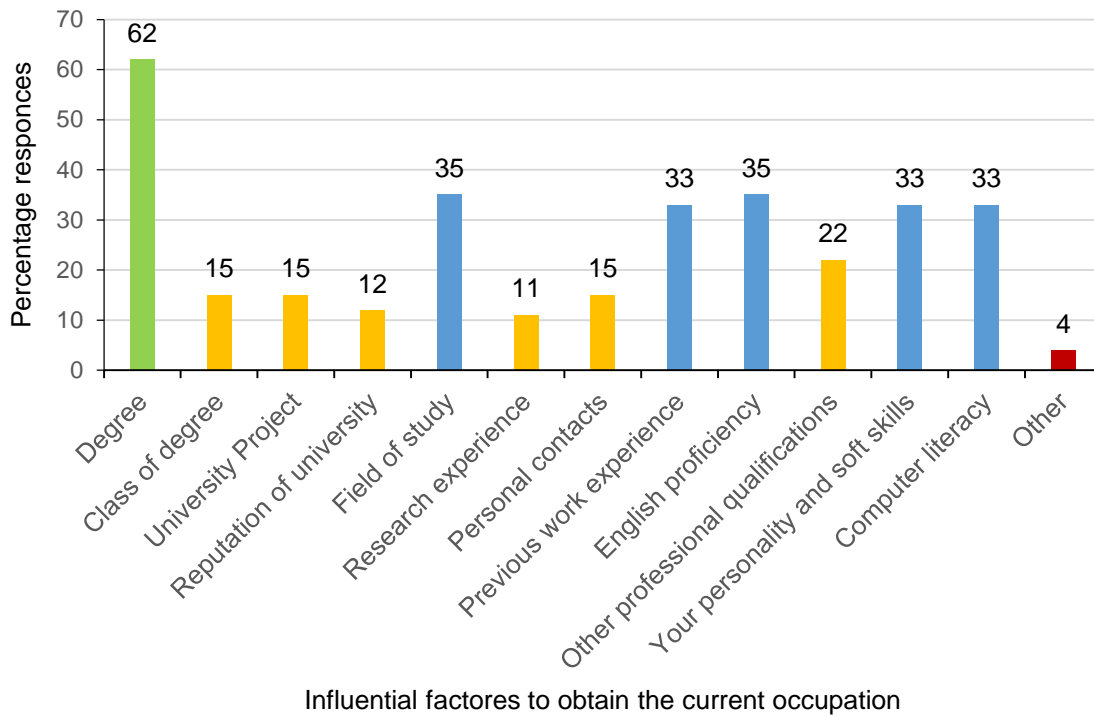


Figure 13. Most influential factors to obtain the present job.

Help from University Education to Career Development

Support of the degree programme to the career development was at satisfactory levels with average scores of nearly 4 out of the 5 Likert scale. Graduates have indicated that the University education has high influence on personal growth. The entrepreneurial skills obtaining through the degree programme was received low rates (**Figure 14**). As such, the faculty have to pay considerable attention to this aspects and provide opportunities for the students to improve necessary competencies. Career guidance supports must be used to improve the competencies in required aspects to support students to facing interviews, acclimatization to the working environment and knowledge for career development.

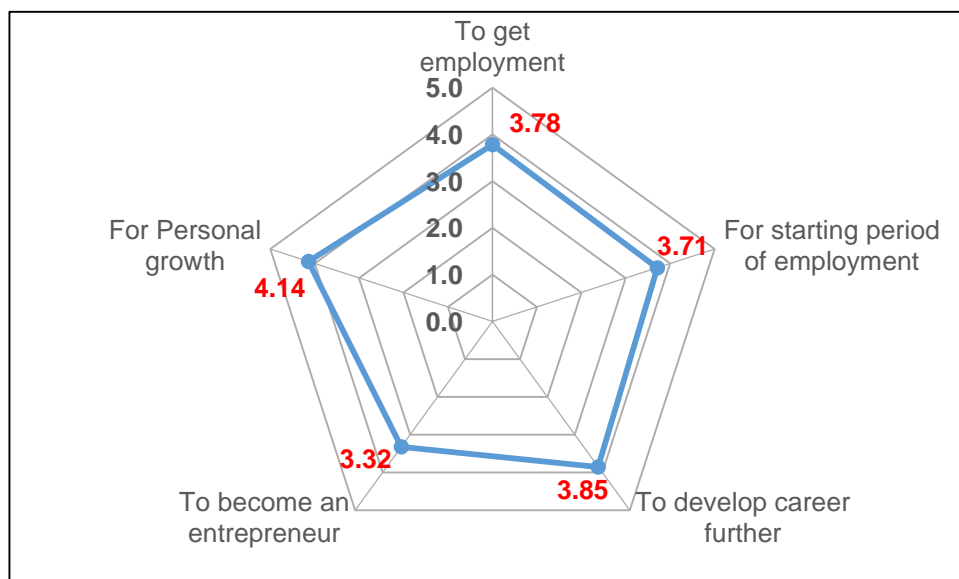


Figure 14. Support from the university education to career development as rated by FAS graduates

Additional Qualifications (Postgraduates, Professional or other) held by Graduates of FAS

Considerable number of students graduated from the FAS had additional qualifications. Among the graduates of FAS 39 of them have completed Diploma level courses and 27 of them are reading for different kind of proficiency at the period of survey (**Table 7**). This information indicates the eagerness of students to be more skilful, knowledgeable and proficient in their career paths and to be an empowered personal to excel in competitive world.

Table 7. Additional qualifications of graduate at the period of survey. (C denotes the completed and R denotes the continuation of the programmes).

Degree	Diploma		CIMA	CMA		CA	MSc		PhD	Other	
	C	R	R	C	R	C	C	R	R	C	R
B.Sc. (General)	13	2	1	2	-	-	-	2	-	5	2
B.Sc. (Joint Major)	21	2	4	2	3	1	-	4	-	3	1
B.Sc. (Special) in Applied Electronics	1	-	-	-	2	-	-	1	1	-	-
B.Sc. (Special) in Mathematics with Statistics	2	-	-	-	-	-	-	-	-	-	-
B.Sc.(Special) in Industrial Management	2	-	-	-	-	1	-	1	-	-	-
B.Sc.(Special) in Computer Science	-	1	-	-	-	-	-	-	-	1	-
Total	39	5	5	4	5	2	-	8	1	9	3