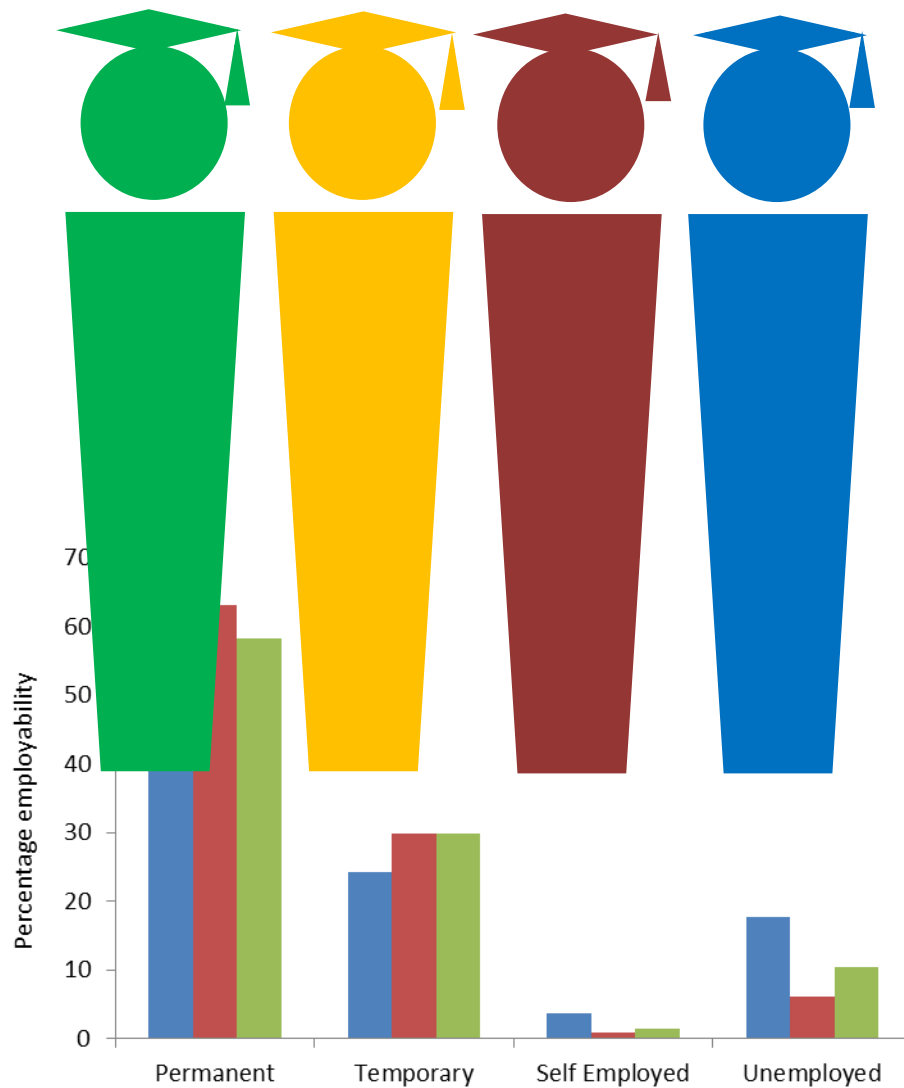


EMPLOYABILITY SURVEY REPORT

WAYAMBA UNIVERSITY OF SRI LANKA



External Affairs Unit
2014



EMPLOYABILITY SURVEY REPORT

WAYAMBA UNIVERSITY OF SRI LANKA

by
Dr. W.M.H.K. Wijenayake and Dr. Aminda Perera
External Affairs Unit
Wayamba University of Sri Lanka
2014

This report should be sited as;
Wijenayake W.M.H.K and Perera A.M. (2014), Employability Survey Report of
Wayamba University of Sri Lanka 2014.

Published by:

External Affairs Units

Wayamba University of Sri Lanka

Addresses: Coordinator/External Affairs (Makandura Premises)

Department of Aquaculture & Fisheries

Faculty of Livestock, Fisheries & Nutrition

Makandura

Gonawila

Coordinator/External Affairs (Kuliyapitiya Premises)

Department of Insurance & Valuation

Faculty of Business Studies & Finance

Kuliyapitiya

E-mail: hiranya_kelum@yahoo.com

methsila240@yahoo.com

All queries should be addressed to:

Coordinator

External Affairs Unit

Wayamba University of Sri Lanka

Makandura

Gonawila

Fax: 031-2299874

E-mail: hiranya_kelum@yahoo.com

Typesetting & Designed by: P.G. Lakmali Gamage, Computer Applications Assistant

***EMPLOYABILITY STATUS OF GRADUATES
OF WAYAMBA UNIVERSITY OF SRI LANKA IN 2014***

FACULTY OF APPLIED SCIENCES

Response rate

The census comprises the graduates of all four departments of the faculty. As it can be seen from the table below, the response rates were high among all graduates from four Departments. Out of all 129 graduates, 117 responded to this census.

Department	No. of questionnaires received
Industrial Management	23
Mathematical Sciences	43
Electronics	30
Computing & Information Systems	21
Total	117

Employability status of graduates

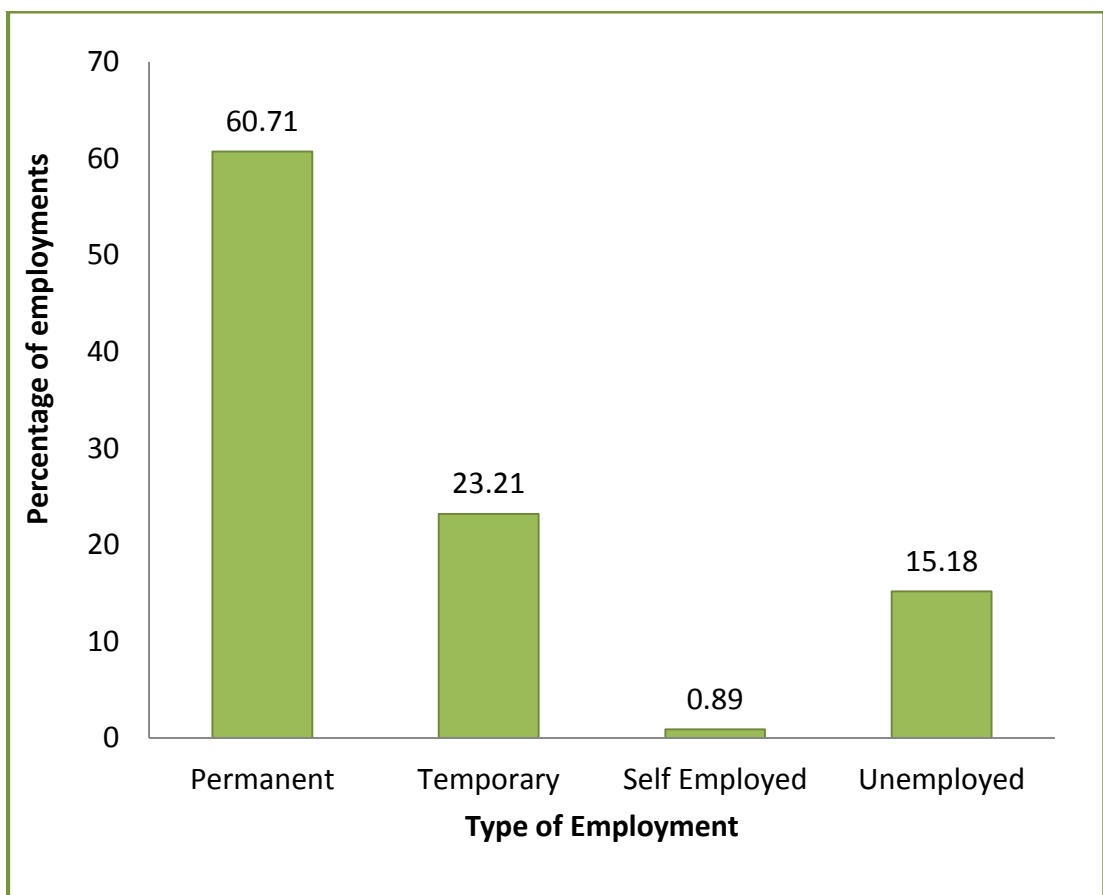
Among the students responded 60.71% were employed in permanent jobs while 23.21% were doing temporary jobs. 15.18% of the students graduated from the Faculty of Applied Sciences were unemployed during the period of the survey. One student of the respondents was self-employed during the said period. The following table indicates the actual numbers of graduates in different categories of employment in relation to their specialization and the graph shows the rate of employability of the students of the Faculty in different categories of employment respectively.

Different categories of employment in relation to the field of specialization

Department	Permanent	Temporary	Self Employed	Unemployed	Total
Industrial Management	15	6	0	2	23
Mathematical Sciences	23	7	1	8	39
Electronics	16	11	0	3	30
Computing & Information Systems	14	2	0	4	20
Total	68	26	1	17	112

(Note: Five students in the sample has not been indicated the employability category as such, this analysis is based on the information of 112 students)

Percentage employability in different categories of employment



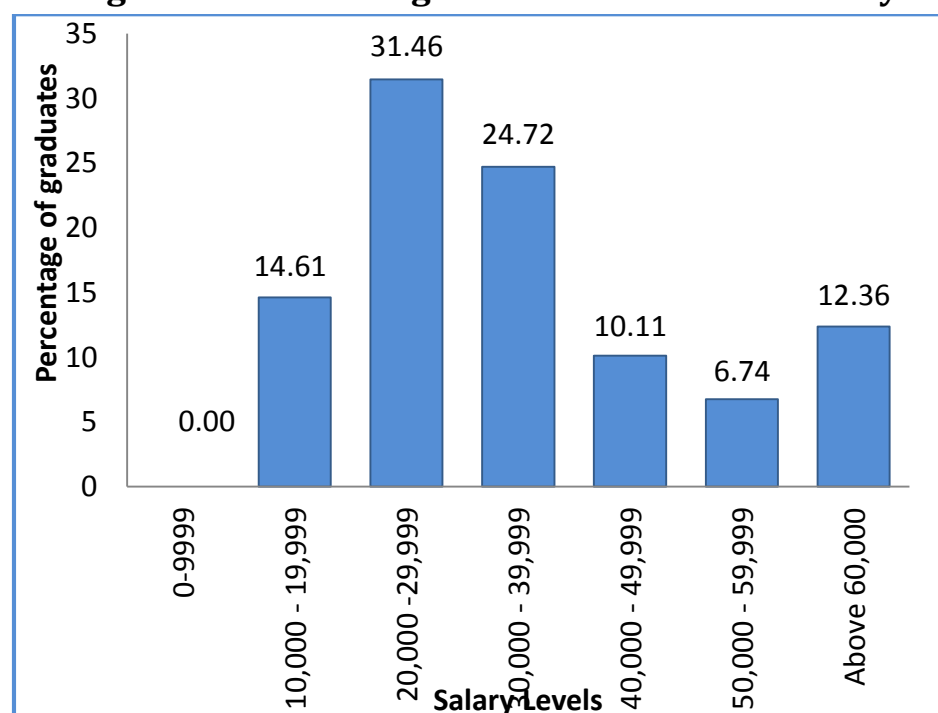
Monthly salary levels

Status of monthly basic salaries was based on the 89 respondents as others did not declare the income status in the questionnaire. Out of the 89 students responded for the questionnaire, 53.93% obtained salaries above 30,000 rupees. Among the graduates responded 12.36% obtained above 60,000 rupees and 6.74% of graduates obtained 50,000-59,999 rupees as their monthly salary. Majority of them (31.46%) were in the salary category of 20,000 to 29,999 rupees while 24.72% graduates earn a monthly income ranging from 30,000 to 39,999 rupees. The lowest salary category was 10,000 to 19,999 rupees and 14.61% graduates fell into that category. The following table and the graph show the distribution of graduates among different salary levels in relation to their specialization and the frequency distribution of monthly income of employed graduates respectively.

Salary levels of graduates in relation to their field of specialization

Monthly Salary Levels (LKR)	Department				Total
	IM	MS	E	CMIS	
0-9,999	0	0	0	0	0
10,000 - 19,999	3	4	4	2	13
20,000 -29,999	6	11	7	4	28
30,000 - 39,999	5	9	3	5	22
40,000 - 49,999	2	3	2	2	9
50,000 - 59,999	1	1	4	0	6
Above 60,000	2	2	5	2	11
Total	19	30	25	15	89

Percentage distribution of graduates in different salary levels



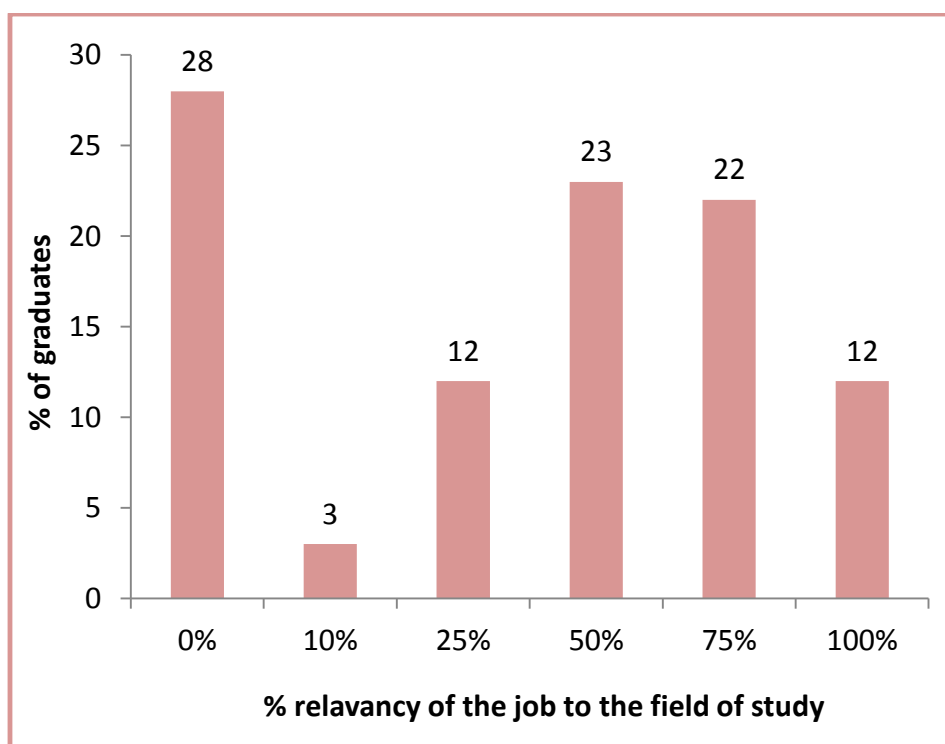
Relevancy of the degree programme to the job

Out of the 117 respondents 100 graduates answered this question. Among all respondents 57% of the graduates were employed. They had more than 50% of relevancy to their field of study and 43% of the employed had jobs, which had less than 50% of relevancy to their fields of studies. The following table and the graph show the distribution of students among different levels of relevancy to their field of study and the percentage frequency of relevancy to their degree respectively.

Relevancy of the field of study to the job

Department	Level of Relevancy					
	Not Relevant 0%	10%	25%	50%	75%	100%
Industrial Management	2	2	2	8	3	4
Mathematical Sciences	17	1	5	4	7	2
Electronics	6	0	2	6	8	3
Computing & Information Systems	3	0	3	5	4	3
Total	28	3	12	23	22	12

Relevancy of the degree programme to the job



Postgraduate/ other qualifications held at present

Among all respondents 33.33% graduates had a diploma and three were reading for the MSc. Another one was reading for an MBA degree. The following table shows the postgraduate/other qualifications presently held by the graduates of the Faculty of Applied Sciences in 2014.

Postgraduate/Other Qualifications held at present

Department	Qualifications					
	MSc.	MPhil	MBA	PhD	LL.B	Diploma & Other
Industrial Management	1 (Reading)	0	0	0	1	12
Mathematical Sciences	1	0	0	0	0	8
Electronics	0	0	1 (Reading)	0	0	10
Computing & Information Systems	1	0	0	0	0	9
Total	3	0	1	0	1	39